

## RESIDENT COMPETITION RESEARCH ARTICLES

## Sentinel Lymph Node Predictors in Melanoma of Breslow Thickness 0.8-1.0 mm

Luisa Christensen, MD<sup>1</sup>, David Carr, MD<sup>2</sup>, Sheena Hill, MD<sup>1</sup>, Elizabeth Ramser, MD<sup>3</sup>, Jaime Abraham Perez, PhD<sup>4</sup>, Jeremy Bordeaux, MD, MPH<sup>1</sup>

<sup>1</sup>Department of Dermatology, University Hospitals Cleveland Medical Center, Cleveland, OH

<sup>2</sup>Department of Internal Medicine, Division of Dermatology, The Ohio State University Wexner Medical Center, Columbus, OH

<sup>3</sup>Department of Dermatology, Ohio Health Riverside Methodist Hospital, Columbus, OH

<sup>4</sup>Department of Clinical Research, University Hospitals Cleveland Medical Center, Cleveland, OH

### ABSTRACT

**Introduction:** Current melanoma staging guidelines consider all patients staged T1b to have the same metastatic risk and recommends that sentinel lymph node biopsy (SLNB) be considered in this disparate group. The goals of this study were to specifically determine predictors of sentinel lymph node positivity and those predictive for obtaining a SLNB in melanomas of Breslow thickness 0.8 mm to 1.0 mm, which has not been previously studied.

**Methods:** Retrospective review between January 1997 and July 2019 of patients with melanomas between 0.8 mm-1.0 mm in thickness. Patient demographics and primary tumor characteristics were correlated with SLN status.

**Results:** Of the 458 patients found to meet Breslow thickness criteria, 223 (61.8%) underwent SLNB. Multivariate analyses demonstrated that < 60 years of age (OR 2.42), increasing Breslow thickness (OR 1.27), mitotic rate >1 (OR 2.32) and presence of tumor infiltrating lymphocytes (OR 3.33), were associated with performing a SLNB. Positive SLNB was found in 20 (8.1 %). Univariate analyses revealed females (p=0.016) to have an increased risk for positive SLNB.

**Limitations:** Limited number of positive SLN and survival data available.

**Conclusions:** Younger age, Breslow thickness  $\geq 0.9$  mm, mitotic rate >1, and presence of tumor infiltrative lymphocytes were found to be factors predictive of performing SLNB. Female gender significantly increased the odds of a positive SLN.

### INTRODUCTION

The prognosis, management, and surveillance of patients with cutaneous

melanoma (CM) is primarily based on staging adopted by the American Joint Committee on Cancer (AJCC).<sup>1</sup> The AJCC identifies patients with thin melanomas ( $\leq 1.0$  mm in Breslow thickness) as having an overall

favorable prognosis with low probability of metastatic spread.<sup>2</sup> However, a small percentage of these patients may go on to develop advanced disease. Based on the shared 5%-10% metastatic risk in patients with primary melanoma of Breslow thickness < 0.8 mm with ulceration and 0.8 mm – 1.0 mm with or without ulceration, these two different patient cohorts are staged as T1b and the National Comprehensive Cancer Network (NCCN) melanoma guidelines recommend considering SLNB in these two populations.<sup>3</sup>

The potential metastatic risk in patients with thin melanomas has led to an extensive attempt to determine predictors of sentinel lymph node (SLN) positivity in thin melanomas, of which primary tumor thickness and ulceration have been shown to be the most important factors associated with a positive sentinel lymph node.<sup>4</sup> Additional clinicopathologic factors, for which a prognostic value is less clear due to variability among studies, include Clark level, mitotic rate, lymphovascular invasion, anatomic site, tumor infiltrating lymphocytes, regression, and patient characteristics such as gender and age.<sup>5-12</sup>

Interestingly, melanomas of Breslow thickness between 0.8 mm to 1.0 mm are considered to have the same risk for positive SLN regardless of any other associated risk factors, and the NCCN recommends considering SLNB in this population, along with thinner melanomas (< 0.8 mm) with ulceration<sup>3</sup>. However, if ulceration and other patient and tumor characteristics are independent predictive factors of progression and survival, we would expect that patients whose melanomas are associated with other risk factors would have a higher likelihood for regional metastasis. To our knowledge, no studies have been conducted regarding SLN predictors in this specific population.

Therefore, we sought to determine predictive factors for performing SLNB and those predictive of positive SLN in this particular cohort.

## METHODS

After approval by the University Hospitals Cleveland Medical Center Institutional Review Board (IRB). Electronic records of patients with biopsy-proven melanoma were reviewed at our institution from January 1, 1997 through July 31, 2019. Patients who met criteria for Breslow thickness between 0.8 mm and 1.0 mm were initially identified through our electronic pathology record system, Copath. Medical records were then reviewed to identify patients who did and did not have a SLNB at the time of primary tumor excision. Patients were excluded if they had a previous history of other thicker melanomas or if no data on SLN outcomes were available. Patient demographics, primary tumor characteristics, and nodal status data were collected.

### Statistical methods

Study covariates included in the analyses were age at diagnosis, gender, anatomic site, Breslow thickness, histologic type, dermal mitotic rate (MR), ulceration, regression, Clark level, lymphovascular invasion (LVI) and tumor infiltrating lymphocytes (TIL). Age at diagnosis was categorized into groups (< 60 years, ≥ 60 years). MR was grouped as < 1 or ≥ 1. Tumor site was designated as head and neck, trunk, upper extremities, lower extremities, or genitalia. Ulceration, regression, and LVI, and TIL were classified as being present or absent.

The primary aim of this study was to identify predictors for performing a SLNB. Multiple logistic regression was used to investigate associations between study covariates and

whether a SLNB was performed. Estimates of odds ratios (OR) and 95% confidence intervals (CI) were provided to evaluate the effects of these associations. Using this analytical framework, we further investigated predictors for SLNB positivity (within SLNB-performed patient group). A p-value  $\leq 0.05$  was considered statistically significant. All statistical analyses were performed by using R version 3.6.2 (2019).

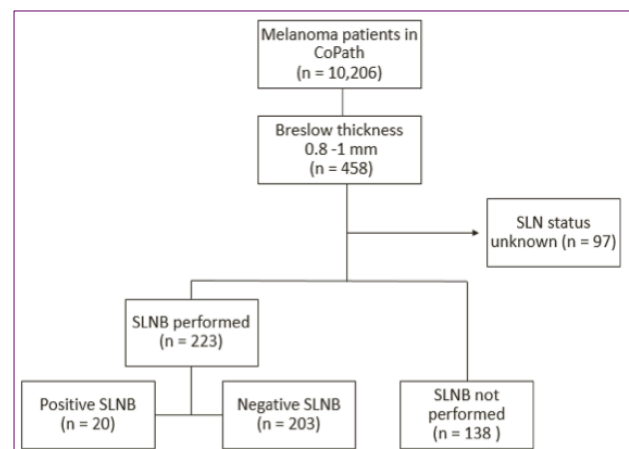
## RESULTS

A total of 10,206 patients diagnosed with primary cutaneous melanoma were identified, of which 458 met criteria for Breslow thickness between 0.8 mm and 1.0 mm. A total of 87 patients were excluded, leaving a cohort of 361 patients available for analysis (**Figure 1**). Of these, 223 (62.8%) underwent SLNB and 138 (51.3%) did not (**Table 1**). Univariate analyses demonstrated that age, Breslow thickness, Clark level, histologic type, MR, and TILs were significantly different between patients in which SLNB was performed and not performed. No difference was found among gender, anatomic location, ulceration, regression, and LVI. Multivariate analyses using these six significant variables demonstrated in univariate analysis revealed that patients 60 years or younger (OR = 2.42, 95% CI = 1.48-4.01), increasing Breslow thickness (0.9 mm: OR=1.27, 95% CI=0.73-2.21; 1 mm: OR=2.44, 95% CI=1.26-4.88), MR > 1 (OR=2.32, 95% CI=1.19-4.8), and presence of TILs (OR=3.33, 95% CI=1.72-6.61), significantly predicted whether patients underwent SLNB (**Table 2**). Clark level and histologic type were not significant in predicting whether patients underwent SLNB.

Within the subset of patients that underwent SLNB, 20 (8.9%) were found to be positive and 203 (91.1%) negative (**Table 3**). The

majority of patients were male (53.8%), however the positive SLNB group was predominately composed of female patients (70.0%). Univariate analyses found significant differences in patient gender, with females having an increased risk for positive SLNB (OR=3.66, 95% CI=1.34-11.67, p=0.016) as compared to males. No other variables were significant.

**Figure 1** Breakdown of patient selection. SLNB, sentinel lymph node biopsy.



## DISCUSSION

To our knowledge, this is the first study reporting predictors for performing SLNB in patients with thin melanomas, specifically those measuring 0.8-1.0 mm. Our results showed that younger age (<60 years), Breslow thickness ( $\geq 0.9$  mm), mitoses (>1), and presence of TIL were all predictive factors for performing SLNB at our institution. The strong evidence in support of Breslow tumor thickness and mitoses as factors independently predictive of melanoma outcomes led to their incorporation into AJCC staging.<sup>1</sup> At our institution, we follow AJCC/NCCN guidelines to stage melanomas and provide recommendations. Although mitoses are no longer used in staging of thin melanomas, this was a risk factor used in previous AJCC staging editions and explains

**Table 1.** Patient demographics and primary tumor characteristics for patients in which SLNB was and was not performed.

| Characteristic                         | SLNB performed<br>(n = 223)<br>No. (%) | SLNB not performed<br>(n = 138)<br>No. (%) | P value |
|--|--|--|---------|
| <b>Age, years</b>                      |  |  | < 0.001 |
| < 60                                   | 130 (59.4)                             | 47 (34.1)                                  |         |
| ≥ 60                                   | 89 (40.6)                              | 91 (65.9)                                  |         |
| <b>Gender</b>                          |  |  | 0.728   |
| Female                                 | 99 (45.2)                              | 66 (47.8)                                  |         |
| Male                                   | 120 (54.8)                             | 72 (52.2)                                  |         |
| <b>Location</b>                        |  |  | 0.234   |
| Head and neck                          | 31 (14.2)                              | 23 (16.6)                                  |         |
| Trunk                                  | 78 (35.6)                              | 51 (37)                                    |         |
| Upper extremities                      | 52 (23.7)                              | 40 (29)                                    |         |
| Lower extremities                      | 57 (26)                                | 24 (17.4)                                  |         |
| Genitalia                              | 1 (0.5)                                | 0  |         |
| <b>Breslow thickness (mm)</b>          |  |  | <0.001  |
| 0.8                                    | 90 (41.1)                              | 79 (57.3)                                  |         |
| 0.9                                    | 64 (29.2)                              | 40 (28.9)                                  |         |
| 1.0                                    | 65 (29.7)                              | 19 (13.8)                                  |         |
| <b>Histologic type</b>                 |  |  | 0.022   |
| Superficial spreading                  | 175 (79.9)                             | 89 (64.5)                                  |         |
| Lentigo maligna                        | 23 (10.5)                              | 30 (21.7)                                  |         |
| Nodular                                | 2 (0.9)                                | 2 (1.5)                                    |         |
| Acral lentiginous                      | 7 (3.2)                                | 6 (4.4)                                    |         |
| Other                                  | 9 (4.1)                                | 10 (7.2)                                   |         |
| Unknown                                | 3 (1.4)                                | 1 (0.7)                                    |         |
| <b>Clark level</b>                     |  |  | 0.019   |
| ≤ III                                  | 42 (19.2)                              | 41 (29.7)                                  |         |
| ≥ IV                                   | 175 (79.9)                             | 95 (68.8)                                  |         |
| Unknown                                | 2 (0.9)                                | 2 (1.5)                                    |         |
| <b>Ulceration</b>                      |  |  | 0.327   |
| Present                                | 11 (5)                                 | 4 (3)                                      |         |
| Absent                                 | 208 (95)                               | 134 (97)                                   |         |
| <b>Mitotic rate per mm<sup>2</sup></b> |  |  | < 0.001 |
| <1                                     | 88 (40.1)                              | 112 (81.2)                                 |         |
| > 1                                    | 130 (59.4)                             | 26 (18.8)                                  |         |
| Unknown                                | 1 (0.5)                                | 0  |         |
| <b>Regression</b>                      |  |  | 0.276   |
| Present                                | 28 (12.8)                              | 23 (16.7)                                  |         |
| Absent                                 | 185 (84.5)                             | 115 (83.3)                                 |         |
| Unknown                                | 6 (2.7)                                | 0  |         |
| <b>LVI</b>                             |  |  | 0.086   |
| Present                                | 24 (10.9)                              | 0  |         |
| Absent                                 | 192 (87.7)                             | 138 (100)                                  |         |
| Unknown                                | 3 (1.4)                                | 0  |         |
| <b>TILs</b>                            |  |  | < 0.001 |
| Present                                | 197 (88.3)                             | 103 (74.6)                                 |         |
| Absent                                 | 16 (7.3)                               | 35 (25.4)                                  |         |
| Unknown                                | 6 (2.7)                                | 0  |         |

Abbreviations: SLNB, sentinel lymph node biopsy; LVI, lymphovascular invasion; TILs, tumor-infiltrating lymphocytes.

**Table 2.** Multivariable logistic regression analysis for predictors of undergoing SLNB (performed on significant variables demonstrated in univariable analysis)

| Variable                               | OR   | 95% CI       | P value |
|--|------|--------------|---------|
| <b>Age</b>                             |      |              | < 0.001 |
| ≥ 60                                   |      | Reference    |         |
| <60                                    | 2.42 | 1.48 to 4.01 |         |
| <b>Gender</b>                          |      |              | 0.197   |
| Male                                   |      | Reference    |         |
| Female                                 | 0.72 | 0.43 to 1.18 |         |
| <b>Breslow thickness (mm)</b>          |      |              | 0.032   |
| 0.8                                    |      | Reference    |         |
| 0.9                                    | 1.27 | 0.73 to 2.21 |         |
| 1                                      | 2.39 | 1.26 to 4.88 |         |
| <b>Clark level</b>                     |      |              | 0.246   |
| I – III                                |      | Reference    |         |
| IV – V                                 | 1.40 | 0.79 to 2.46 |         |
| <b>Mitotic rate per mm<sup>2</sup></b> |      |              | 0.014   |
| ≤ 1                                    |      | Reference    |         |
| > 1                                    | 2.32 | 1.19 to 4.8  |         |
| <b>TILs</b>                            |      |              | < 0.001 |
| Absent                                 |      | Reference    |         |
| Present                                | 3.33 | 1.72 to 6.61 |         |
| <b>Histologic type</b>                 |      |              | 0.235   |
| Superficial spreading                  |      | Reference    |         |
| Acral lentiginous                      | 0.92 | 0.26 to 3.35 |         |
| Lentigo maligna                        | 0.46 | 0.23 to 0.92 |         |
| Nodular                                | 0.54 | 0.04 to 3.83 |         |
| Other                                  | 0.65 | 0.21 to 2.01 |         |
| <b>Ulceration</b>                      |      |              | 0.489   |
| Absent                                 |      | Reference    |         |
| Present                                | 1.55 | 0.46 to 6.21 |         |

Abbreviations: SLNB, sentinel lymph node biopsy; OR, odds ratio; CI, confidence interval; TILs, tumor-infiltrating lymphocytes.

why mitotic rate may have been considered when recommending SLNB in this specific group.

When management recommendations are not clearly stated in NCCN guidelines, we follow an evidence-based approach to provide appropriate recommendations. Although younger age (<60 years) is not used as part of melanoma staging per AJCC, this patient-specific factor has been shown to be an important independent predictor of melanoma outcomes<sup>13</sup> and its association with a positive SLNB in thin melanomas has

**Table 3.** Patient demographics and primary tumor characteristics for positive and negative SLNB.

| Characteristic                         | Positive SLNB       | Negative SLNB        | P value |
|--|---------------------|----------------------|---------|
|  | (n = 20)<br>No. (%) | (n = 203)<br>No. (%) |         |
| <b>Age, years</b>                      |                     |                      | 0.738   |
| < 60                                   | 11 (55)             | 121 (59.6)           |         |
| ≥ 60                                   | 9 (45)              | 82 (40.4)            |         |
| <b>Gender</b>                          |                     |                      | 0.010   |
| Female                                 | 14 (70)             | 88 (43.3)            |         |
| Male                                   | 6 (30)              | 115 (56.7)           |         |
| <b>Location</b>                        |                     |                      | 0.314   |
| Head and neck                          | 2 (10)              | 30 (14.8)            |         |
| Trunk                                  | 4 (20)              | 75 (36.9)            |         |
| Upper extremities                      | 6 (30)              | 47 (23.2)            |         |
| Lower extremities                      | 8 (40)              | 50 (24.6)            |         |
| Genitalia                              | 0                   | 1 (0.5)              |         |
| <b>Breslow thickness (mm)</b>          |                     |                      | 0.378   |
| 0.8                                    | 9 (45)              | 83 (40.9)            |         |
| 0.9                                    | 4 (20)              | 61 (30)              |         |
| 1.0                                    | 7 (35)              | 59 (29.1)            |         |
| <b>Histologic type</b>                 |                     |                      | 0.859   |
| Superficial spreading                  | 17 (85)             | 160 (78.8)           |         |
| Lentigo maligna                        | 1 (5)               | 22 (10.8)            |         |
| Nodular                                | 0                   | 2 (1)                |         |
| Acral lentiginous                      | 1 (5)               | 6 (3)                |         |
| Other                                  | 1 (5)               | 9 (4.4)              |         |
| Unknown                                | 0                   | 4 (2)                |         |
| <b>Clark level</b>                     |                     |                      | 0.298   |
| ≤ III                                  | 2 (10)              | 40 (19.7)            |         |
| ≥ IV                                   | 18 (90)             | 161 (79.3)           |         |
| Unknown                                | 0                   | 2 (1)                |         |
| <b>Ulceration</b>                      |                     |                      | 0.154   |
| Present                                | 0                   | 11 (5.4)             |         |
| Absent                                 | 20 (100)            | 192 (94.6)           |         |
| <b>Mitotic rate per mm<sup>2</sup></b> |                     |                      | 0.657   |
| < 1                                    | 9 (45)              | 82 (40.4)            |         |
| ≥ 1                                    | 11 (55)             | 120 (59.1)           |         |
| Unknown                                | 0                   | 1 (0.5)              |         |
| <b>Regression</b>                      |                     |                      | 0.271   |
| Present                                | 5 (25)              | 23 (11.3)            |         |
| Absent                                 | 15 (75)             | 174 (85.7)           |         |
| Unknown                                | 0                   | 6 (3)                |         |
| <b>LVI</b>                             |                     |                      | 0.459   |
| Present                                | 1 (5)               | 23 (11.3)            |         |
| Absent                                 | 19 (95)             | 177 (87.2)           |         |
| Unknown                                | 0                   | 3 (1.5)              |         |
| <b>TILs</b>                            |                     |                      | 0.885   |
| Present                                | 18 (90)             | 180 (88.6)           |         |
| Absent                                 | 2 (10)              | 17 (8.4)             |         |
| Unknown                                | 0                   | 6 (3)                |         |

Abbreviations: SLNB, sentinel lymph node biopsy; LVI, lymphovascular invasion; TILs, tumor-infiltrating lymphocytes.

been demonstrated in several studies.<sup>9-12</sup> Our results show that younger age (<60

years) is a predictive factor for performing SLNB and thus aligns with currently published data demonstrating an increased risk for positive SLNB in this population.

Why the presence of TIL is a predictive factor for performing SLNB is less clear. There is conflicting evidence regarding the association between TIL and regional nodal metastasis in melanoma. Although some studies have reported a lower risk for positive SLNB in melanomas with TIL,<sup>14-18</sup> others have not shown such a relationship.<sup>8-9,19-21</sup> Absence of TIL has been demonstrated to be an independent predictor of SLN positivity.<sup>14,22</sup> It is unlikely that patients in our cohort underwent SLNB based on TIL alone given the available evidence. The results are possibly due to the relatively small number of cases. Further studies are needed to specifically determine the significance of TIL in thin melanomas, if any.

Although several studies have attempted to evaluate clinicopathologic predictors of SLN positivity in thin melanomas, no study has specifically looked at melanomas measuring 0.8 to 1.0 mm in thickness. Thus, we reviewed our cohort to determine which characteristics were predictive of SLN positivity in this specific population. Our results revealed that female gender significantly increases the odds of having a positive SLN. This correlates with the findings from Wright *et al.*<sup>10</sup> but contrasts with other studies in which male gender was found to increase regional metastatic risk.<sup>9,23</sup> Given the inconsistency among reports, no consensus currently exists regarding the association between gender and risk for metastasis in thin melanomas.

Ulceration has been reported to be an important risk factor in patients with thin melanomas.<sup>7,9,24-31</sup> As a result, AJCC designates a more advanced stage for



melanomas with Breslow thickness <0.8 mm with ulceration as compared to melanomas <0.8 mm without ulceration. Interestingly, melanomas of Breslow thickness 0.8-1 mm are given the same stage regardless of ulceration status. This grouped staging is likely the result of variability in data and lack of a strong correlation between ulceration and metastatic risk as thin melanomas become thicker. Our study, which focuses on this very specific group, revealed zero patients with ulcerated melanomas in the positive SLNB group. All patients with ulcerated melanomas (n=11) had a negative SLNB. Thus, no increased risk for SLN metastasis was found based on ulceration alone. Other patient and tumor characteristics variably reported in the literature to increase the risk for positive SLN, including age, Breslow thickness, mitotic rate, Clark level, TIL, and regression, were not found to significantly increase the risk for positive SLNB in this group.

Limitations to our study include its retrospective and single institution nature, likely introducing selection bias, and a limited number of cases available for review, making it difficult to statistically assess for significant differences. Several other studies have encountered a similar limitation given that certain tumor traits, such as ulceration and SLN metastasis, in thin melanomas are uncommon. Moreover, we attempted to study survival outcomes in this group, but there were not enough cases with a positive SLN or survival data available for a significant statistical analysis.

## CONCLUSION

In summary, our study represents the first analysis of predictors of performing SLNB and of increased risk for positive SLN in patients with melanomas of Breslow thickness between 0.8 and 1.0 mm. Our

results revealed that younger age (<60 years), increased Breslow thickness ( $\geq 0.9$  mm), mitotic rate  $>1$ , and presence of TIL were predictive factors of performing SLNB. Female gender was found to be the only statistically significant factor to increase the risk for positive SLN. We believe these findings can potentially improve management recommendations and enhance patient care.

**Conflict of Interest Disclosures:** None

**Funding:** None

**Corresponding Author:**

Luisa Christensen, MD  
11100 Euclid Ave  
Cleveland, OH 44106  
Email: [luisa.christensen@uhhospitals.org](mailto:luisa.christensen@uhhospitals.org)

## References:

1. American Joint Committee on Cancer. AJCC Cancer Staging Manual. 8th ed. Springer International Publishing; 2017.
2. Andtbacka RH, Gershenwald JE. Role of sentinel lymph node biopsy in patients with thin melanoma. *J Natl Compr Canc Netw*. 2009 Mar;7(3):308-17.
3. National Comprehensive Cancer Network. Cutaneous Melanoma (Version 3.2020). [https://www.nccn.org/professionals/physician\\_gls/pdf/cutaneous\\_melanoma.pdf](https://www.nccn.org/professionals/physician_gls/pdf/cutaneous_melanoma.pdf). Accessed June 17, 2020.
4. Yonick DV, Ballo RM, Kahn E, et al. Predictors of positive sentinel lymph node in thin melanoma. *Am J Surg*. 2011 Mar;201(3):324-7
5. Munsch C, Lauwers-Cances V, Lamant L, et al. Breslow thickness, clark index and ulceration are associated with sentinel lymph node metastasis in melanoma patients: a cohort analysis of 612 patients. *Dermatology*. 2014;229(3):183-9.
6. Cavanaugh-Hussey MW, Mu EW, Kang S, et al. Older Age is Associated with a Higher Incidence of Melanoma Death but a Lower Incidence of Sentinel Lymph Node Metastasis in the SEER Databases (2003-2011). *Ann Surg Oncol*. 2015 Jul;22(7):2120-6.
7. Han D, Zager JS, Shyr Y, et al. Clinicopathologic predictors of sentinel lymph node metastasis in thin melanoma. *J Clin Oncol*. 2013 Dec 10;31(35):4387-93.
8. Cordeiro E, Gervais M, Shah PS, et al. Sentinel Lymph Node Biopsy in Thin Cutaneous Melanoma: A Systematic Review and Meta-Analysis. *Ann Surg Oncol*. 2016; 23:4178-4188.

September 2020 Volume 4 Issue 5

9. Conic RRZ, Ko J, Damiani G. Predictors of sentinel lymph node positivity in thin melanoma using the National Cancer Database. *J Am Acad Dermatol*. 2019;80:441-7.
10. Wright BE, Scheri RP, Ye X, et al. Importance of sentinel lymph node biopsy in patients with thin melanoma. *Arch Surg*. 2008 Sep;143(9):892-9.
11. Venna SS, Thummala S, Nosrati M, et al. Analysis of sentinel lymph node positivity in patients with thin primary melanoma. *J Am Acad Dermatol*. 2013;68:560-567.
12. Sondak VK, Taylor JM, Sabel MS, et al. Mitotic rate and younger age are predictors of sentinel lymph node positivity: Lessons learned from the generation of a probabilistic model. *Ann Surg Oncol*. 2004;11:247-258.
13. Khosrotehrani K, Dasgupta P, Byrom L, et al. Melanoma survival is superior in females across all tumor stages but is influenced by age. *Arch Dermatol Res*. 2015;307:731-40.
14. Taylor RC, Patel A, Panageas KS, et al. Tumor-Infiltrating Lymphocytes Predict Sentinel Lymph Node Positivity in Patients With Cutaneous Melanoma. *J Clin Oncol*. 2007;25:869-875.
15. Clark WH Jr, Elder DE, Guerry DT, et al. Model predicting survival in stage I melanoma based on tumor progression. *J Natl Cancer Inst*. 1989;81:1893-1904.
16. Clemente CG, Mihm MC Jr, Bufalino R, et al. Prognostic value of tumor infiltrating lymphocytes in the vertical growth phase of primary cutaneous melanoma. *Cancer*. 1996;77:1303-1310.
17. Sondergaard K, Schou G: Survival with primary cutaneous malignant melanoma, evaluated from 2012 cases: A multivariate regression analysis. *Virchows Arch A Pathol Anat Histopathol*. 1985;406:179-195.
18. Johnson OK Jr, Emrich LJ, Karakousis CP, et al. Comparison of prognostic factors for survival and recurrence in malignant melanoma of the skin, clinical stage I. *Cancer*. 1985; 55:1107-1117.
19. Larsen TE, Grude TH: A retrospective histological study of 669 cases of primary cutaneous malignant melanoma in clinical stage I: The relation between the tumour-associated lymphocyte infiltration and age and sex, tumour cell type, pigmentation, cellular atypia, mitotic count, depth of invasion, ulceration, tumour type and prognosis. *Acta Pathol Microbiol Scand*. 1978;86A:523-530.
20. Barnhill RL, Fine JA, Roush GC, et al. Predicting five-year outcome for patients with cutaneous melanoma in a population-based study. *Cancer*. 1996;78: 427-432.
21. Thorn M, Ponten F, Bergstrom R, et al. Clinical and histopathologic predictors of survival in patients with malignant melanoma: A population based study in Sweden. *J Natl Cancer Inst*. 1994;86:761-769.
22. Kruper L, Botbyl B, Czerniecki B, et al. Sentinel lymph node status in stage II/III melanoma. *J Clin Oncol*. 2005;23:710S (suppl; abstr 7501).
23. Gimotty PA, Guerry D, Ming ME, et al. Thin primary cutaneous malignant melanoma: a prognostic tree for 10-year metastasis is more accurate than American Joint Committee on Cancer Staging. *J Clin Oncol*. 2004;22:3668–3676.
24. Mozzillo N, Pennacchhioli E, Gandini S, et al. Sentinel node biopsy in thin and thick melanoma. *Ann Surg Oncol*. 2013;20(8):2780–6.
25. Stitzenberg KB, Groben PA, Stern SL, et al. Indications for lymphatic mapping and sentinel lymphadenectomy in patients with thin melanoma (Breslow thickness B1.0 mm). *Ann Surg Oncol*. 2004;11(10): 900-6.
26. Ranieri JM, Wagner JD, Wenck S, et al. The prognostic importance of sentinel lymph node biopsy in thin melanoma. *Ann Surg Oncol*. 2006;13(7):927– 32.
27. Wong SL, Faries MB, Kennedy EB, et al. Results of sentinel lymph node biopsy in patients with thin melanoma. *Ann Surg Oncol*. 2006;13(3):302–9.
28. Cecchi R, Buralli L, Innocentiu, De Gaudio C. Sentinel lymph node biopsy in patients with thin melanomas. *J Dermatol*. 2007;34(8):512–5.
29. Vermeeren L, Van der Ent, Sastrowijoto P, Hulsewe. Sentinel lymph node biopsy in patients with thin melanoma: occurrence of nodal metastases and its prognostic value. *Eur J Dermatol*. 2010;20(1):30–34.
30. Murali R, Haydu LE, Quinn MJ, et al. Sentinel lymph node biopsy in patients with thin primary cutaneous melanoma. *Ann Surg*. 2012;255(1):128–31. Mitteldorf C, Bertsch HP, Jung K, et al. Sentinel node biopsy improves prognostic stratification in patients with thin (pT1) melanomas and an additional risk factor. *Ann Surg Oncol*. 2014;21(7):2252–8.